



*From gushing waterfalls to thousands of FOOTFALLS*

**1**  
**Center**  
**Lonavala**



**Center**



**Lonavala**

Located at the most prominent location on the Mumbai-Pune Highway (Lonavala main market turn-off junction), "Center 1 Lonavala" promises to be the next retail / commercial hub of this hill station.

The complex has well appointed spaces for restaurants, shops and offices along with provision for storage space in basements and lofts for each unit. Ample car parking space has been provided for owners and visitors in the complex. Direct access from the Mumbai-Pune Highway ensures a continuous stream of clientele within this bustling complex.

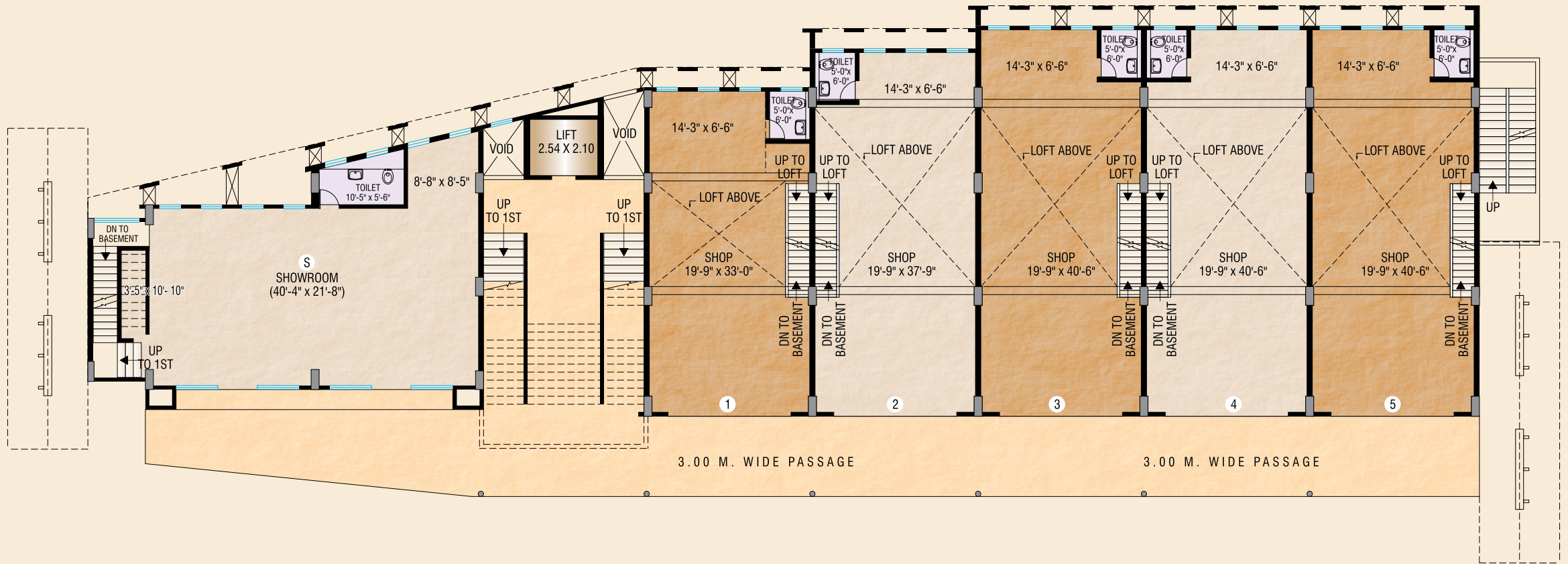
Given its central location, high visibility, convenient access, modern architecture, high quality amenities and excellent quality of construction "Center 1 Lonavala" promises to be the premier address for all retail and commercial activity in Lonavala. This complex is ideal for shops, restaurants, banks and local offices of professionals and businessmen.



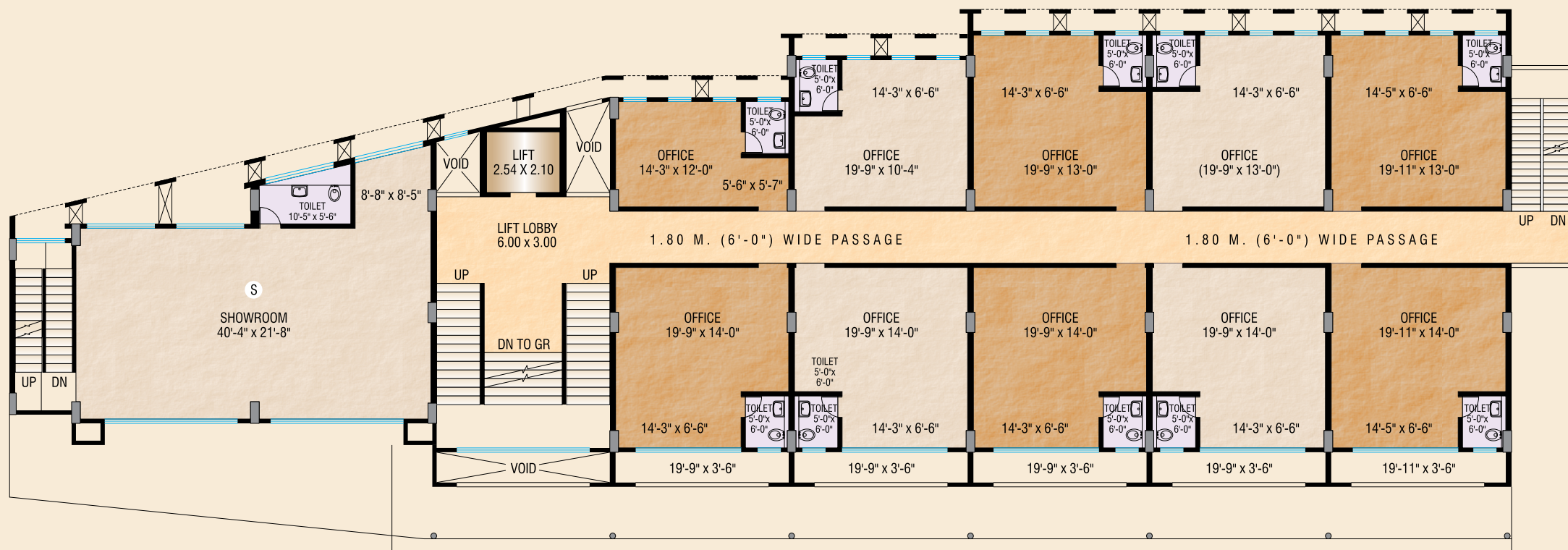




# GROUND FLOOR PLAN



# FIRST FLOOR PLAN



## LONAVALA LOYALISTS



- Lonavala is a popular hill station located at a convenient 1.5 hrs drive from Mumbai and 1 hr drive from Pune along the 8 lane Mumbai-Pune Expressway
- Its gushing waterfalls, lush green countryside, deep valleys and cool and fresh air attracts thousands of tourists every day, not only from Mumbai and Pune, but from all over the country
- Lonavala is also a well known vacation home destination for the affluent residing in Mumbai and Pune. Several well known industrialists and Bollywood personalities have their weekend homes in Lonavala and Khandala
- Earlier what was once a quiet hill station has over the years become a bustling town with tourists, malls and cinemas. It has also become a self sustaining economy with thriving businesses in the hospitality, tourism, handicrafts and real estate sectors
- Given Lonavala's proximity to Navi Mumbai and the new international airport, Lonavala and adjoining areas have now become attractive real estate investment destinations

## PROJECT FEATURES

- Located in the heart of Lonavala on the Mumbai-Pune Highway
- Project executed by reputed Mumbai based developers with a track record of over 3 decades
- Large restaurant areas
- Shops with good frontage and visibility
- Spacious offices with a convenient access
- Provision for storage spaces with basements and lofts in each unit
- Ample parking
- Landscaped garden and porch area
- Modern architecture with excellent amenities



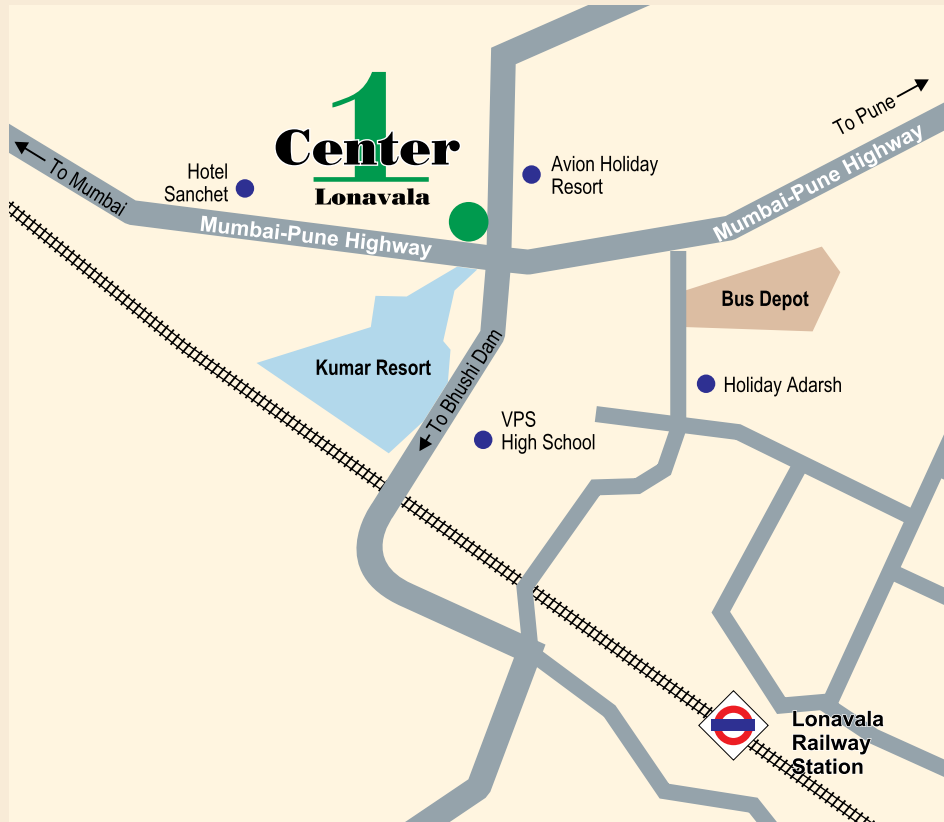


## PROJECT AMENITIES

- Well designed entrance
- Landscaping and horticulture in compound
- Vitrified tile flooring
- Toilets to have full height tiling
- Compound to be well paved
- Intercom system
- Main entrance to have CCTV surveillance
- All units to have good quality glass frontage
- External paint to be of good texture quality
- Internally all units to be painted with acrylic paint
- Tube light and fan fitting to be provided in each unit
- Reputed brand elevator



## LOCATION MAP



Site: Mumbai-Pune Highway, Opp. Kumar Resort, Lonavala.

### FOR BOOKINGS CONTACT

Office: 3, Krishna Mahal, Ground Floor, 63, Marine Drive, 'D' Road, Mumbai - 400 020.  
 Tel.: +91 22 2281 1775 • Fax: +91 22 2281 8739 • Cell: 98923 63237  
 E-mail: admin@rhythmindia.in • Website: www.rhythmindia.in



PROJECT TEAMS

Developer



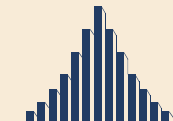
**POINT PROJECTS PVT. LTD.**

J/V Partners



**ASHISH GROUP**  
Great Homes

Ashish Group with an experience of three decades has successfully completed projects totaling 3 million sq. ft.



**RHYTHM REALTY**  
Transforming India

Real estate development company currently involved with residential, commercial & hospitality related projects in Mumbai and Lonavala



**RUPANI GROUP**

In Telecom & Real Estate business since over three decades

Architecture

**ARCHITECTURAL CONSULTANTS**

RCC Consultants

**ENGINEERING DESIGN CENTRE**